



CM^eX20W

External MCM for ABB B21/B23/B24, Wireless M-Bus

CMEx20W enables ABB electricity meters with IR interface to communicate via wireless M-Bus. The product serves as an M-Bus slave and can be connected to any master following the M-Bus standard. CMEx20W is the perfect product for collection of values from ABB meters where wiring, from the meter to the data center, is not an option.

READY TO USE

CMEx20W makes it possible for ABB electricity meters with IR interface to communicate via wireless M-Bus. The communication is automatically configured between CMEx20W and the ABB meter. CMEx20W allows transmission of meter values from the ABB meter via a standardized interface that can be handled by all receivers on the market that complies with the standard EN13757. This makes the product very suitable for usage in sub metering projects where high flexibility and low price is requested.

STANDARD OPEN PROTOCOLS

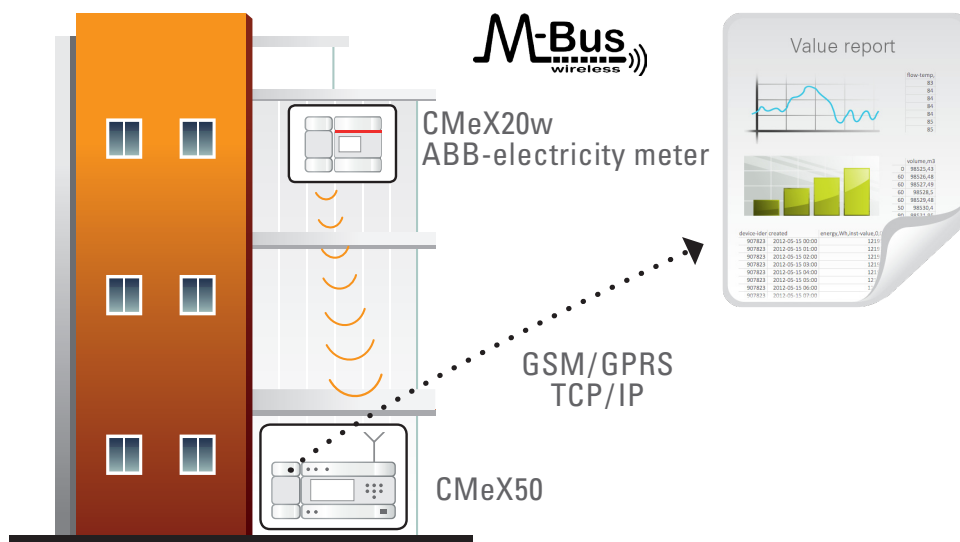
CMEx20W communicates via standard open protocols with any software supporting the M-Bus standard, which means that existing M-Bus systems can use the product without proprietary solutions.

FLEXIBLE

The CMEx Series contains modules with various functions to meet a great variety of customer demands. The series contains for example I/O modules and D/A modules to read input signals or control output signals.

COST EFFECTIVE

The modular and expandable design allows the customer to select a suitable level based on price and functionality. The low initial cost and the possibility to add modules to existing installations provide a future proof solution.



Mechanics

Casing material	ABS UL94-V0, white
Protection class	IP20
Dimensions (w x h x d)	35 x 95 x 65 mm (2 DIN modules)
Weight	100 g
Mounting	Mounted on DIN rail (DIN 50022) 35 mm
Antenna	Built-in, or optionally external via SMA-f

Electrical connection

Supply voltage	Screw terminal. Cable 0.25-1.5 mm ²
----------------	--

Electrical characteristics

Nominal voltage	220-240 VAC (+/- 10%)
Frequency	50 Hz
Power consumption (max)	<2.5 W
Power consumption (nom)	<1 W
Installation category	CAT 3

Environmental specifications

Operating temperature	-20 °C to +55 °C
Operating humidity max	80 % RH at temperatures up to 31 °C, decreasing linearly to 50 % RH at 40 °C
Operating altitude	0-2000 m
Pollution degree	Degree 2
Usage environment	Indoors, can be extended with IP67 enclosure for outdoor use
Storage temperature	-40 °C to +85 °C

User interface

Green LED	Power
Red LED	Error
Orange LED	Encrypted mode
Push button	Configuration/activation

M-Bus

Interfaces	IR, M-Bus slave
------------	-----------------

M-Bus slave interface

M-Bus standard	EN 13757-4. Communication by T1.
Frequency	868,95 MHz
Addressing modes	Electricity meter's secondary address
M-Bus information	All fields in the first telegram of the electricity meter
Transmit power	25 mW
Transmit interval	16 s
Encryption	Unencrypted (default) or encrypted

Integration

Meter implementation	ABB meters with IR interface
Maximum number of connected meters	1

Approvals

EMC	EN 61000-6-2, EN 61000-6-3
Safety	EN 60950-1, CAT 3